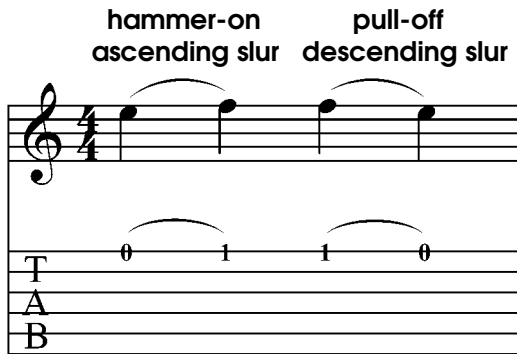


Table of Contents

What is the Carcassi Crash Course?.....	3
What You Need for the Course.....	4
Essentials of Notation.....	5
Technique and Musicianship Defined.....	7
Course Rules.....	10
Rules of Right and Left-Hand Technique.....	13
Free Stroke and Rest Stroke.....	16
Slur Technique.....	17
Producing a Beautiful, Varied Tone.....	21
Advanced Assignments Related to Carcassi's Works.....	33
Advanced Technical and Rhythmic Guidelines for Scale Exercises.....	34
Advanced Musical Guidelines for Scale and Cadence Exercises.....	37
Artificial Harmonics.....	38

Slur Technique

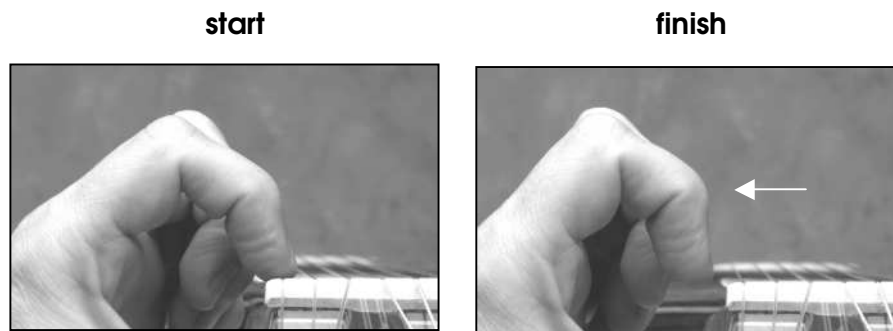
When two different notes (pitches) are connected by a curved line, the first note is plucked by the right hand and the second note is **slurred** or played by the left hand alone. Slurs can **ascend** (hammer-ons) or **descend** (pull-offs), as shown below:



To perform the **descending** slur above:

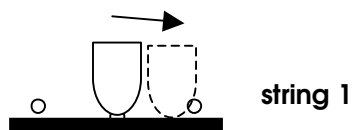
Plucking Phase: Place the tip (not the underside) of left-hand finger 1 behind the first fret of string 1 and pluck it with a right-hand finger. Fret the note for its full duration.

Slurring Phase: Move finger 1 rapidly across the string, essentially plucking it:



Don't allow the finger to rise upward before moving sideways.

When descending slurs are performed on strings 2-6, the slurring fingertip can move parallel to the fingerboard and briefly rest on the adjacent string. Perspective of this diagram is reversed compared to the photograph:



Often, a descending slur note must be fretted. In the example below, fingers 1 and 2 are placed behind frets 2 and 3 when the first note is plucked. The early placement of finger 1 is indicated by (1). In addition, finger 1 must remain on the string until the last note E is plucked:

The image shows a musical staff in 4/4 time with a treble clef. The first measure contains a slur over two eighth notes: G4 (fret 2) and F#4 (fret 3). The second measure contains a dotted quarter note E4 (open string). Fingerings are indicated as follows: finger 2 for the first note, finger 1 for the second note, and finger 1 in parentheses below the first note. Below the staff is a guitar fretboard diagram with strings labeled T, A, and B. The diagram shows frets 2 and 3 on the T string, and frets 3, 2, and 0 on the A and B strings.